

News From MTI

Hello Mass Timber Colleagues!

Feature: Port Royal 6B (Timber House)

Port Royal 6B (Timber House) is an exciting mass timber building that demonstrates a new way to build with mass timber in the multi-unit residential market sector. Designed in collaboration between Fast + Epp and RWA Group Architecture Ltd for Aragon Properties, the 120,000 square foot complex will consist of 6 and 5-story buildings on the Fraser River in New Westminster, BC. The U-shaped complex will feature 77 units in different configurations all built with cross-laminated timber (CLT) construction that provide resistance to both gravity and seismic demands.



Image: RWA Group Architecture Ltd.



Image: RWA Group Architecture Ltd.



As a developer project, the design challenge was to create a cost-effective kit-of-parts mass timber structural system, which could also be exposed within the units. A prefabricated structure has been designed that can be installed quickly, with special attention to detailing which included the custom steel hold down straps for the CLT shear walls and concrete “plugs” at platform frame junctions designed to minimize the effects of wood shrinkage. The project, once constructed, will be one of the very few buildings in the local market with CLT wall and floor approaches. CLT panels began arriving on site for installation in June 2021, and the grand opening is scheduled for 2022.

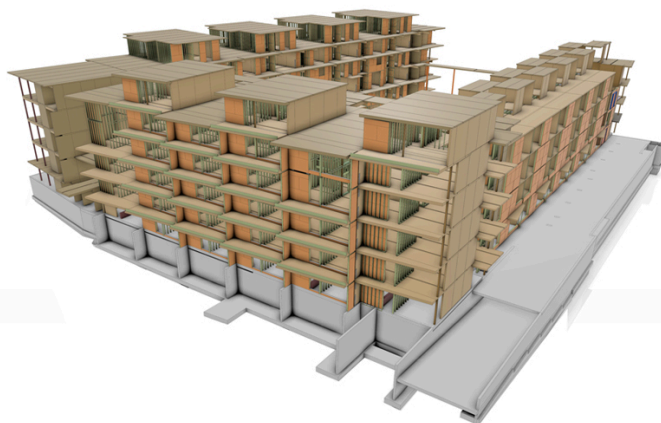


Image: Fast + Epp/CADMakers

Text: Fast + Epp

News from the Institute

1. MTI joins Remsoft Education Partners to Model Wood Supply

MFC Student, Vanessa Nhan, is using Remsoft's Woodstock Optimization Studio to address the following question in her project: is there a sustainable wood supply in Ontario for mass timber? [Read more in this article.](#)

Other Updates

- BC is investing an additional \$2 million in the Mass Timber Demonstration Program to [open a second intake!](#) The investment follows a \$4.2 million first round earlier this year.
- Lumber prices [continue to fall](#).
- Get excited architecture students - TimberFever is just around the corner! [See competition details here.](#)

That's all for now -- thanks for reading!



Copyright © 2021 Mass Timber Institute, All rights reserved.

You can reach us by phone at:

416-978-0561

Want to change how you receive these emails?

You can [update your preferences](#) or [unsubscribe from this list](#).

This email was sent to <<Email Address>>

[why did I get this?](#) [unsubscribe from this list](#) [update subscription preferences](#)

Mass Timber Institute · 1016W-33 Willcocks St · Toronto, On M5S 3B3 · Canada

